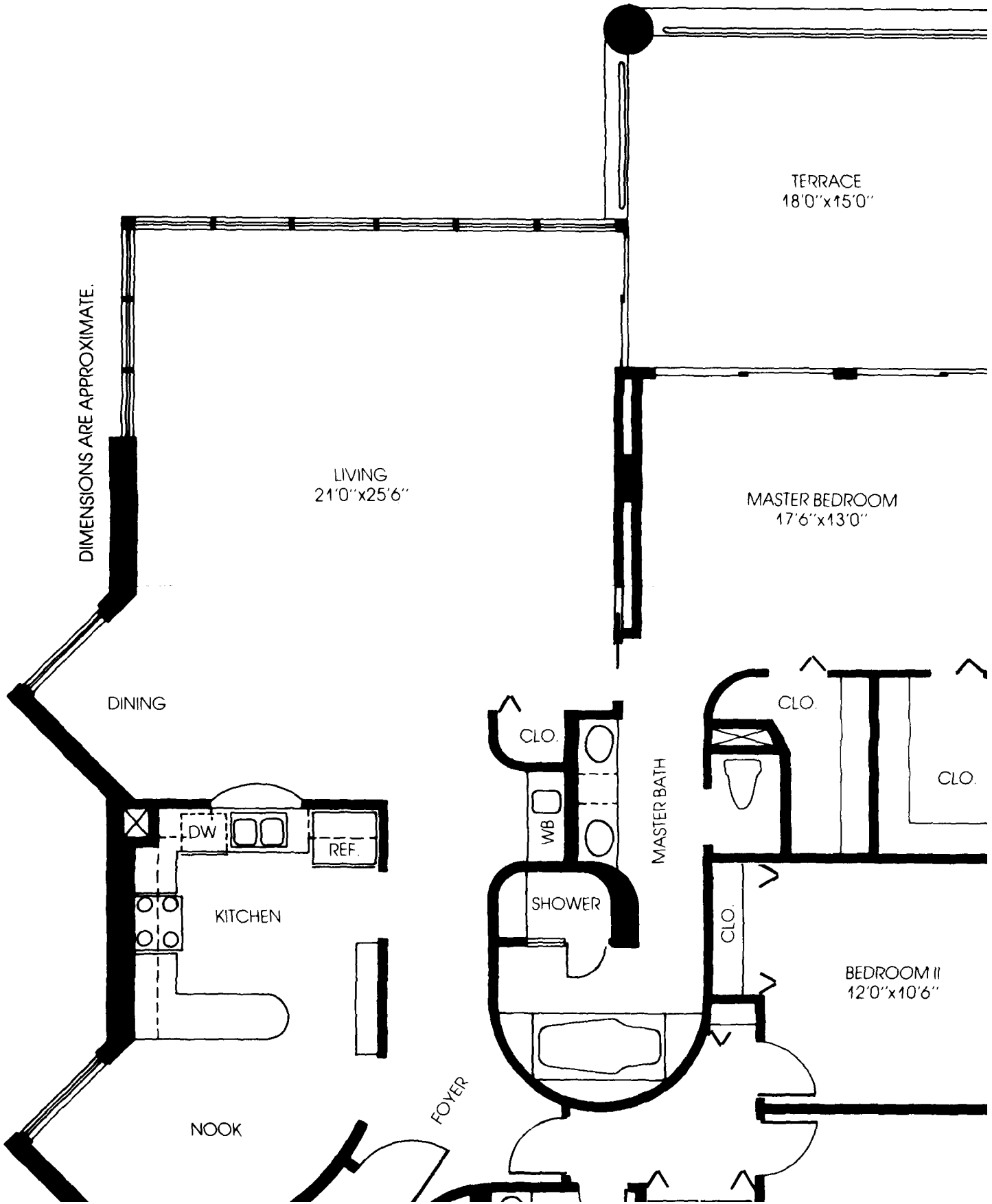


DIMENSIONS ARE APPROXIMATE.



LIVING  
21'0" x 25'6"

TERRACE  
18'0" x 15'0"

MASTER BEDROOM  
17'6" x 13'0"

DINING

DW

REF.

KITCHEN

NOOK

FOYER

CLO.

WB

SHOWER

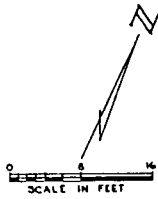
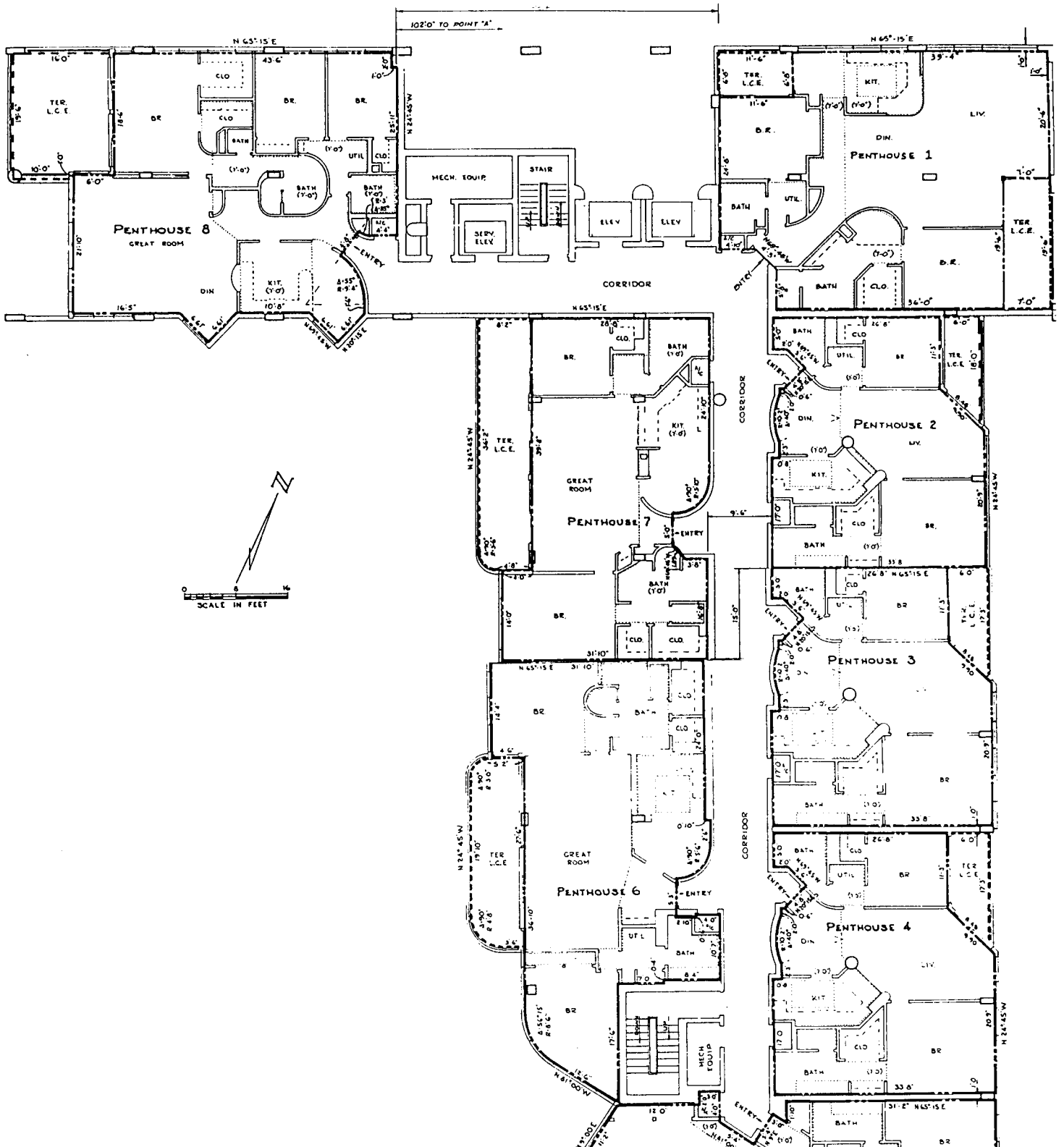
MASTER BATH

CLO.

CLO.

CLO.

BEDROOM II  
12'0" x 10'6"



# TERRACES

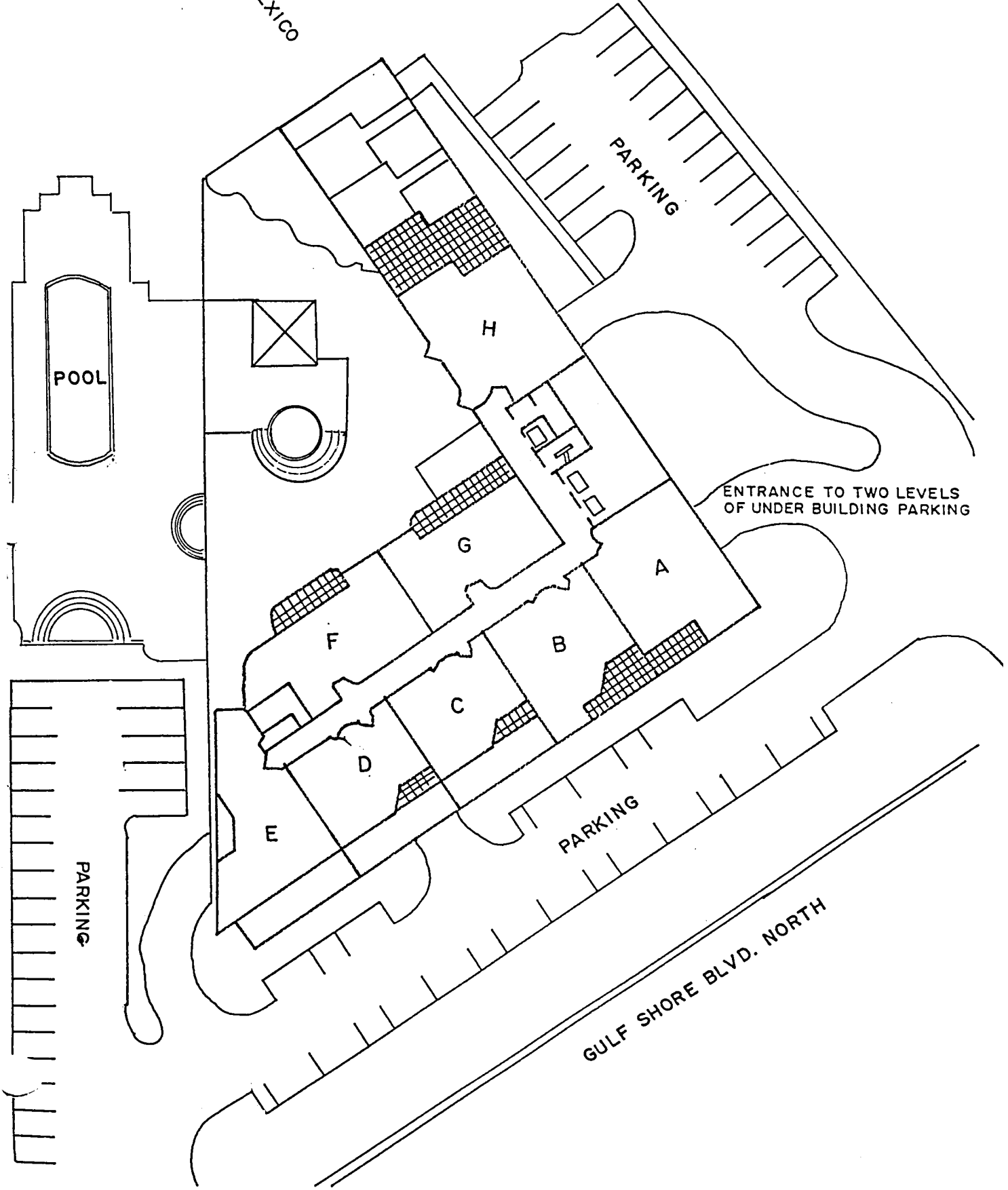
6-319

4751 GULF SHORE BLVD. NORTH

ZONE 6

18 FLOORS — 116 UNITS

GULF OF MEXICO



ENTRANCE TO TWO LEVELS OF UNDER BUILDING PARKING

POOL

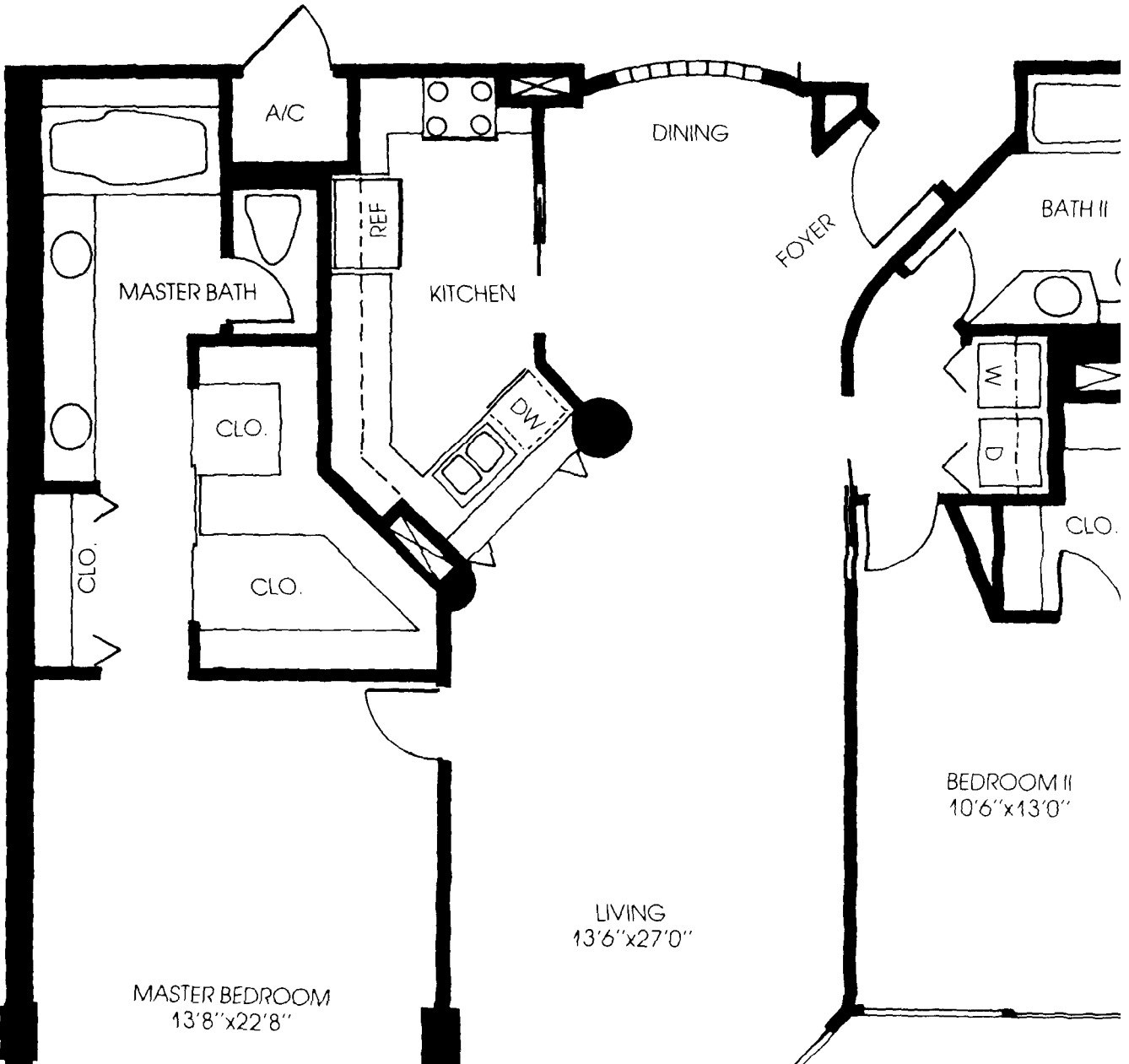
PARKING

PARKING

PARKING

GULF SHORE BLVD. NORTH

ROXIMATE.



MASTER BEDROOM  
13'8" x 22'8"

LIVING  
13'6" x 27'0"

BEDROOM II  
10'6" x 13'0"

A/C

DINING

FOYER

BATH II

MASTER BATH

KITCHEN

REF

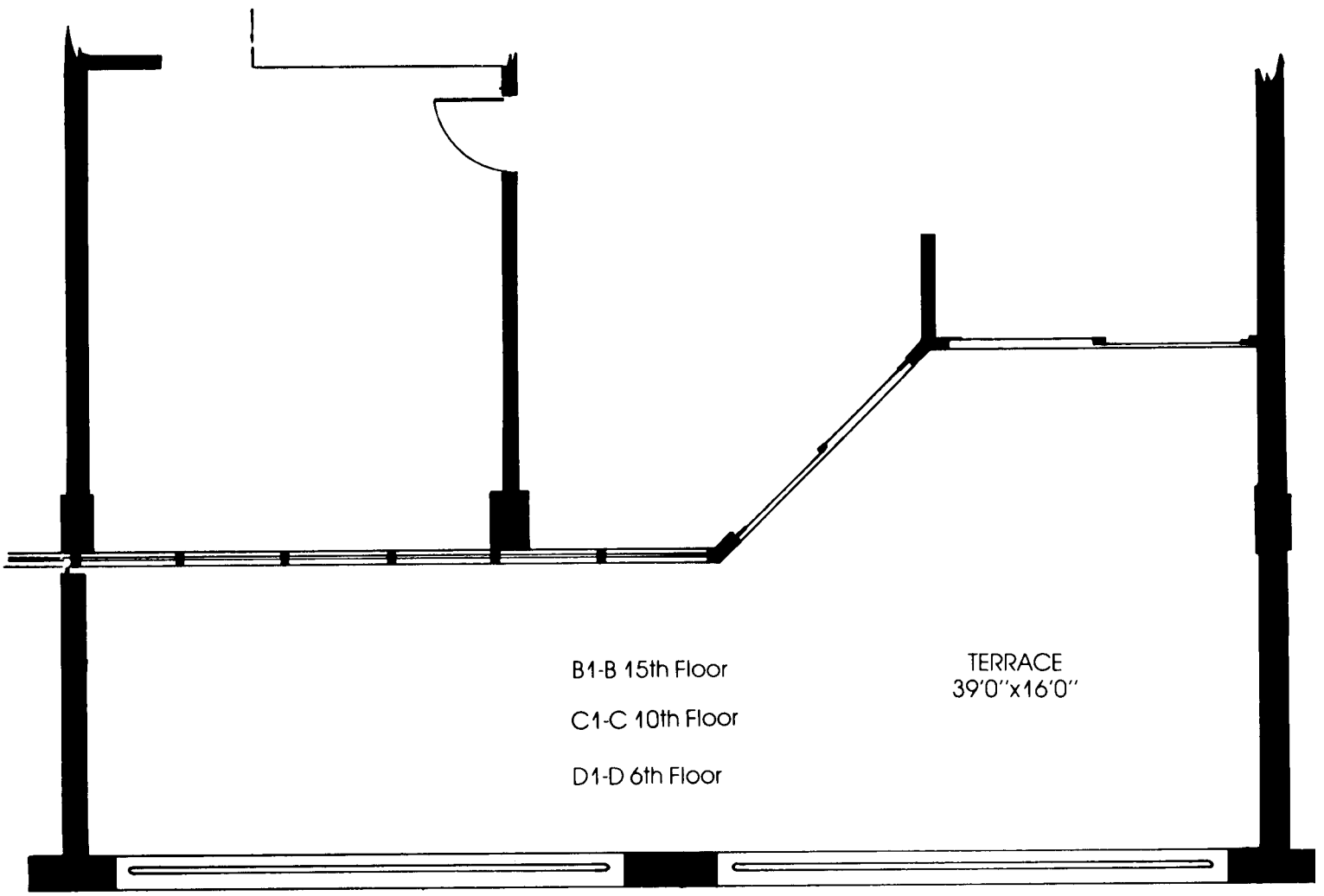
DW

CLO.

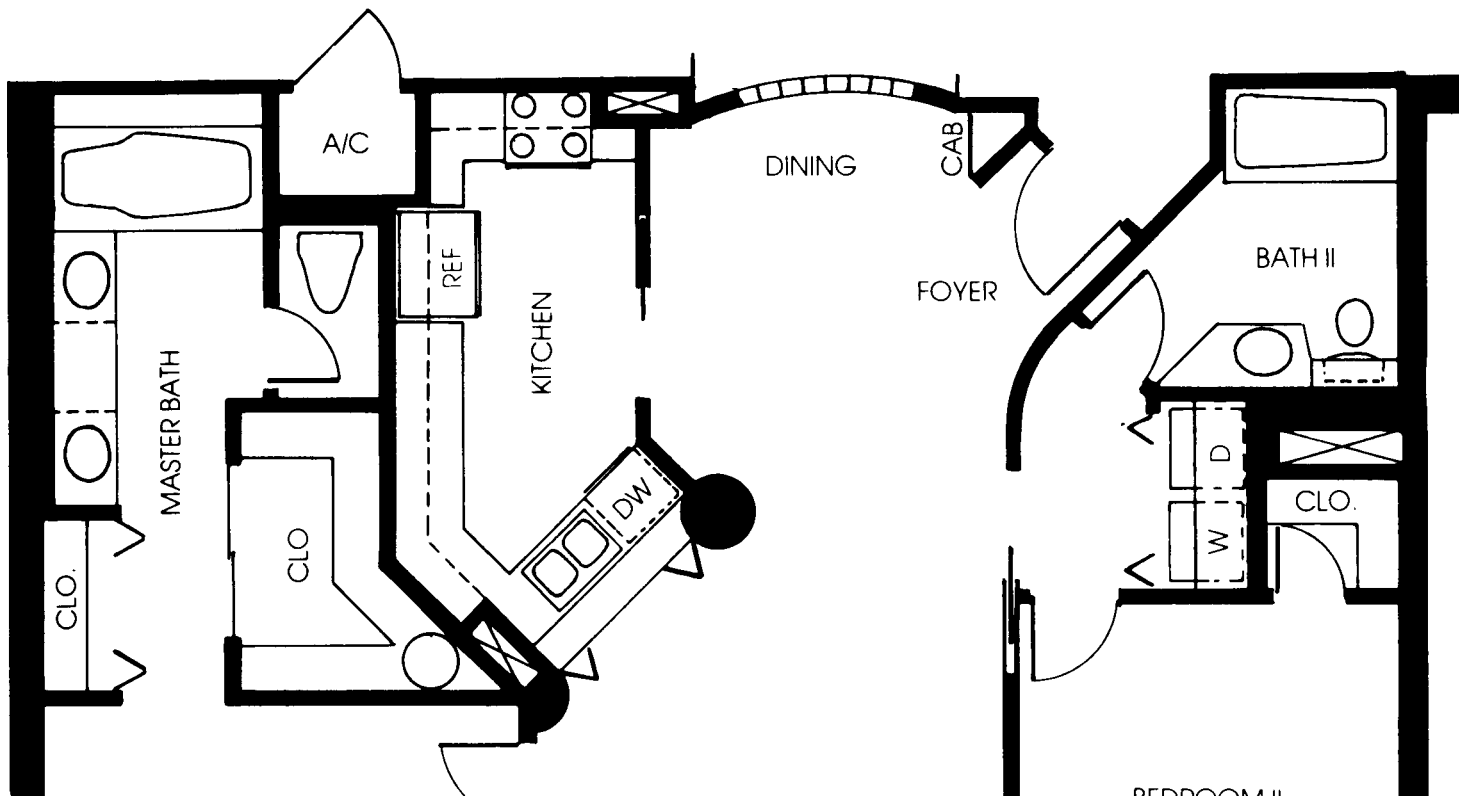
CLO.

CLO.

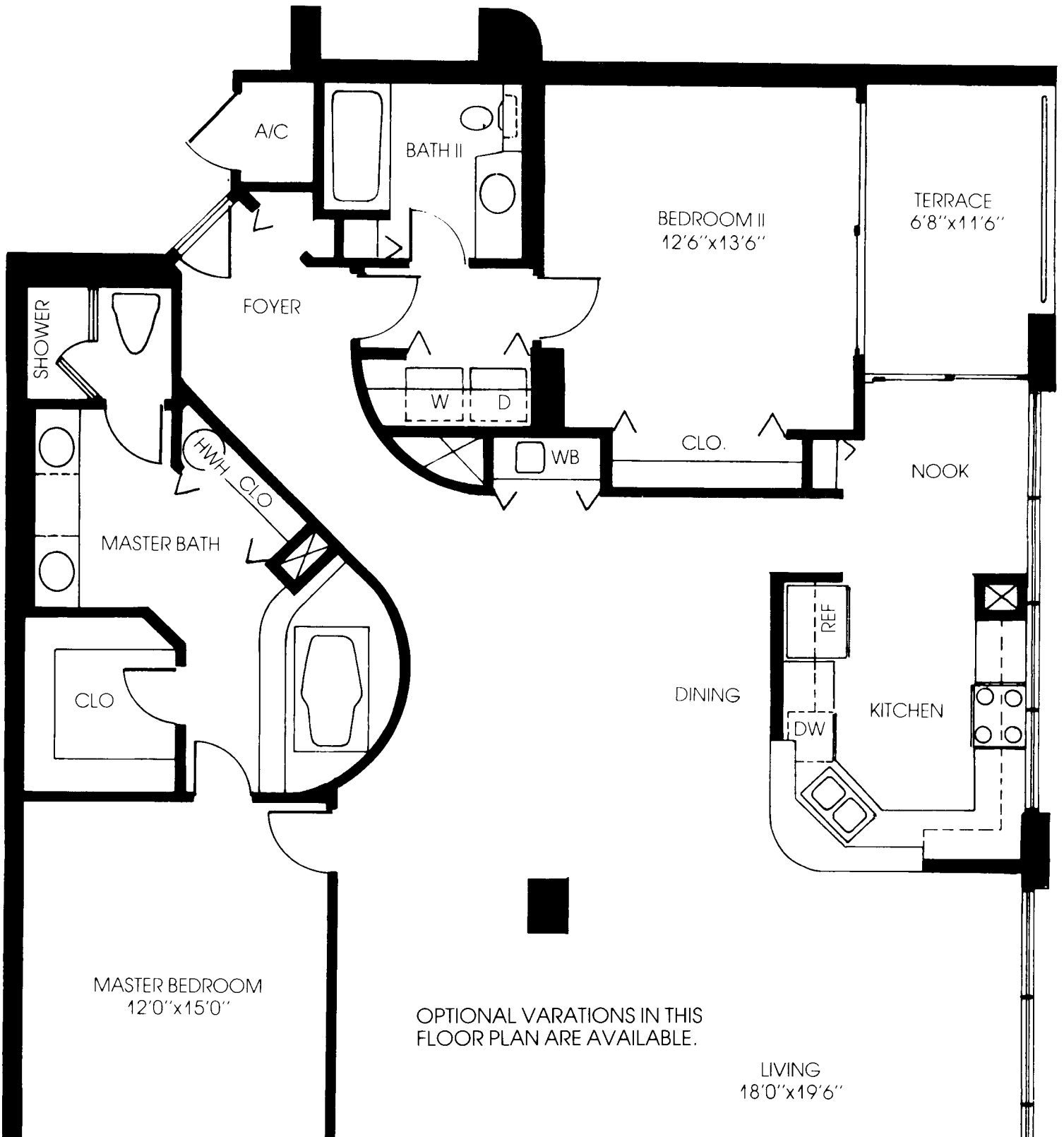
CLO.



SQUARE FOOTAGE: 1252. TERRACE: 466.

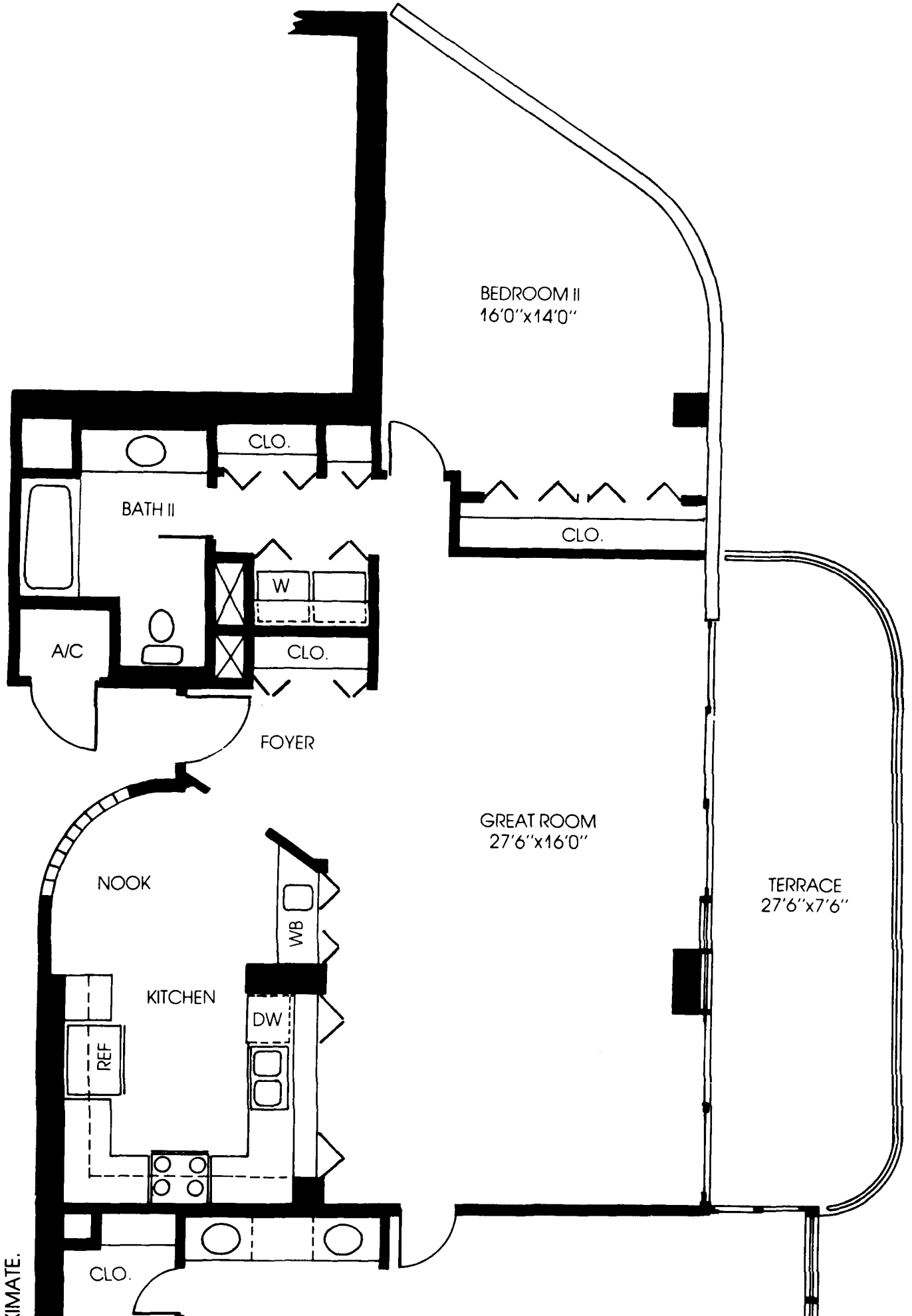


PROXIMATE.



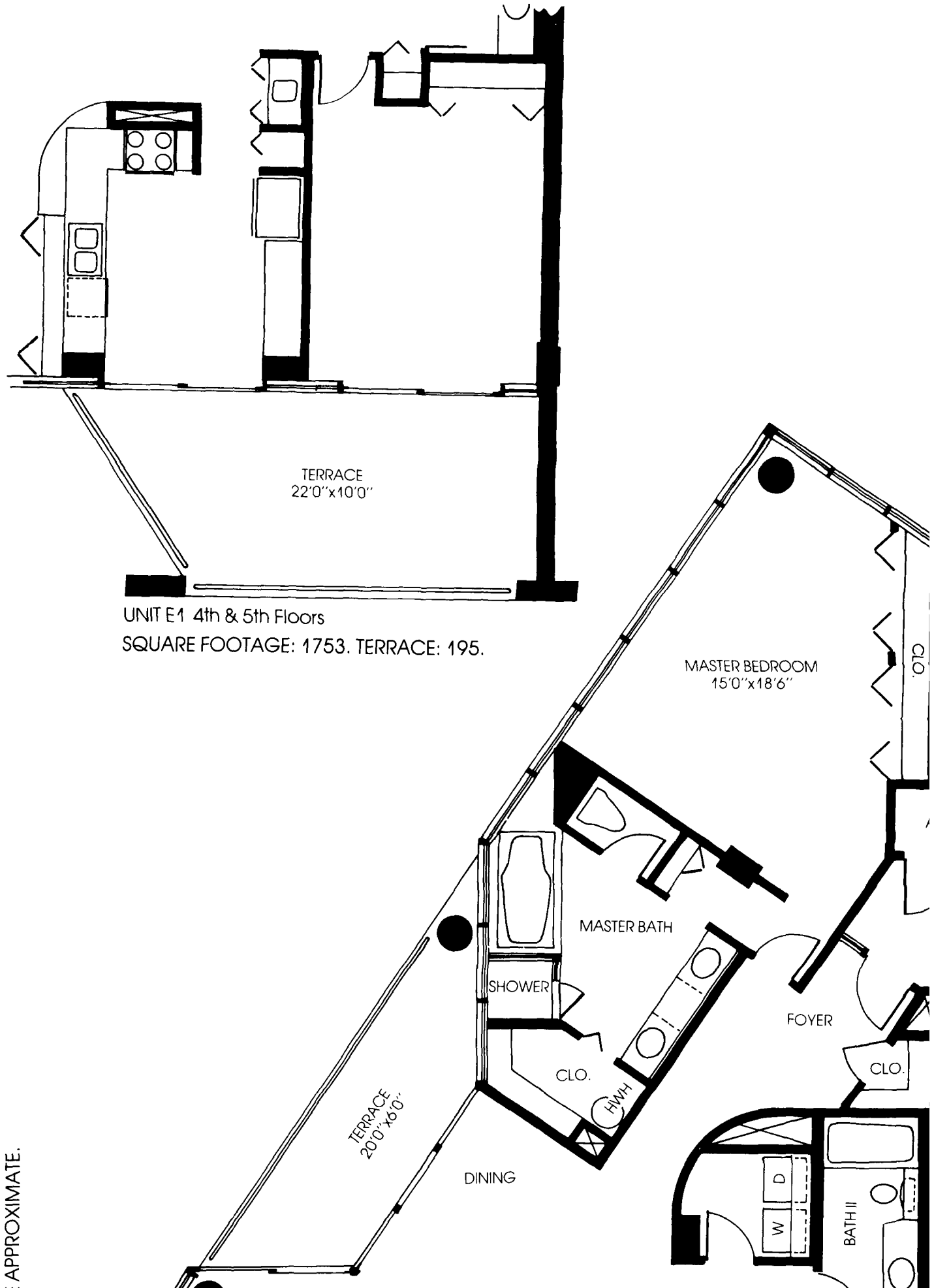
OPTIONAL VARIATIONS IN THIS FLOOR PLAN ARE AVAILABLE.

LIVING  
18'0" x 19'6"



CLIMATE.





APPROXIMATE.

DIMENSIONS ARE APPROXIMATE.

