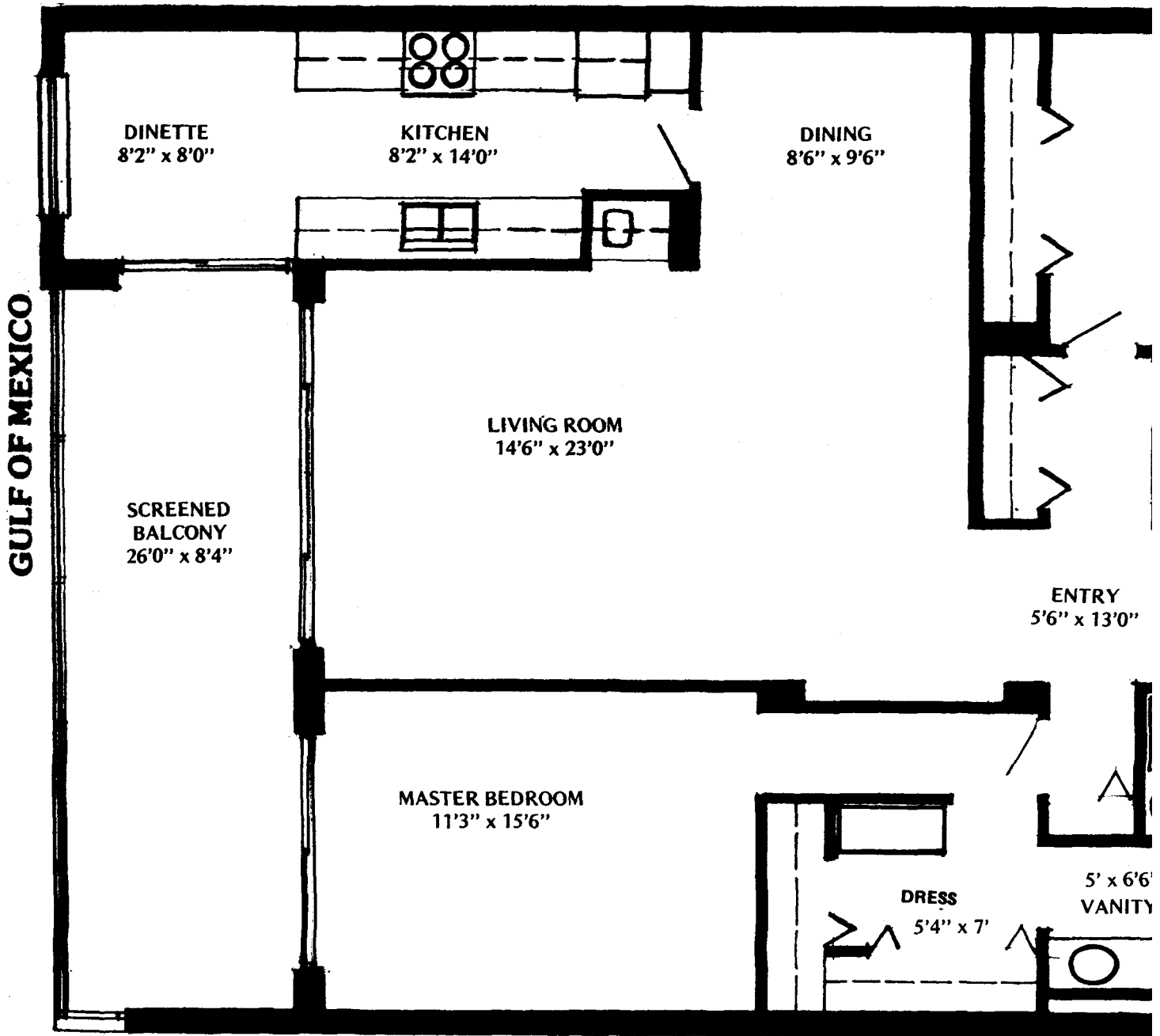


TWO BEDROOM SOUTH

ENCLOSED AREA: 1489 Sq. Ft.

BALCONY & ENTRY: 242 Sq. Ft.

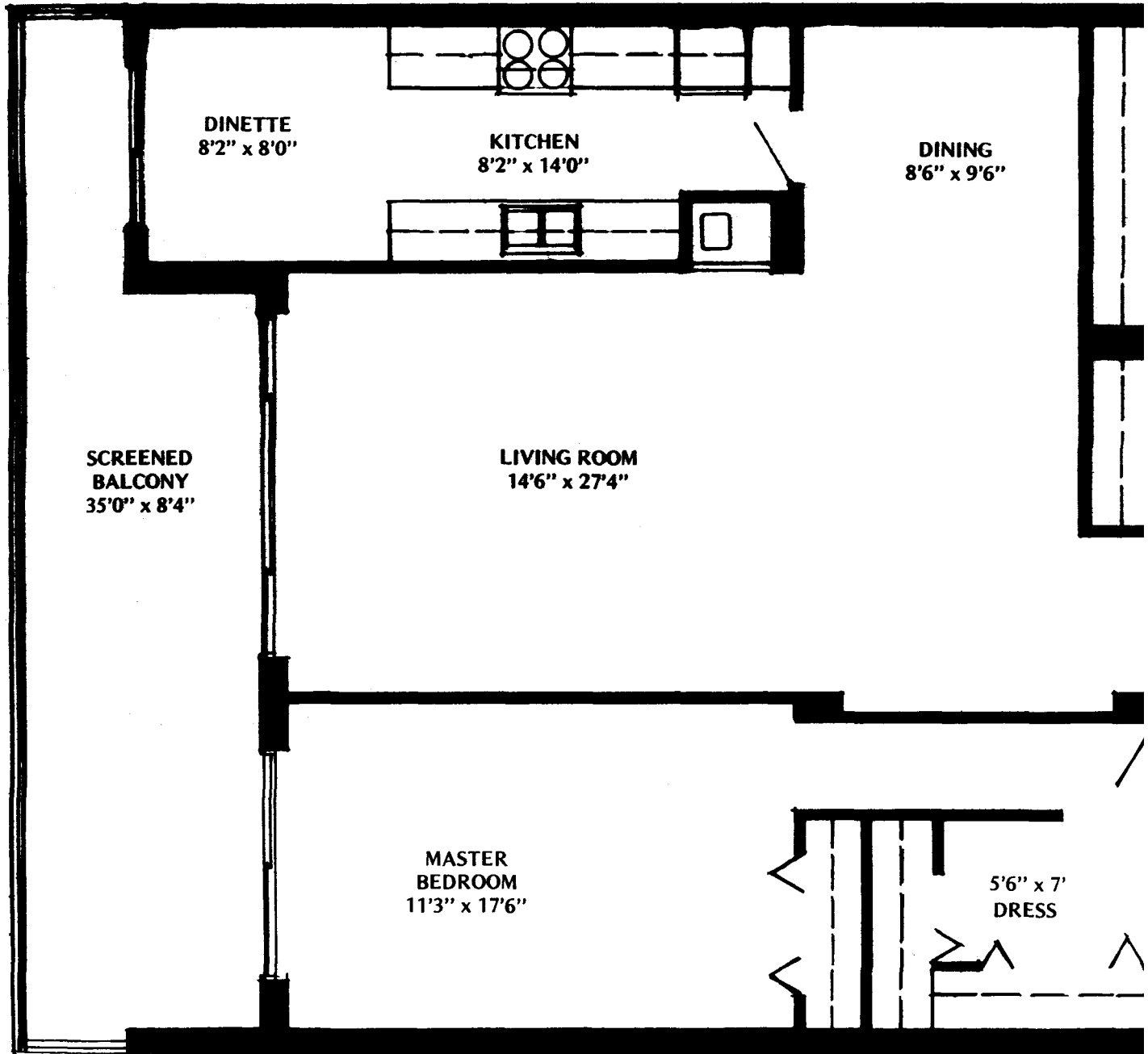
TOTAL AREA: 1731 Sq. Ft.



TWO BEDROOM CENTER

ENCLOSED AREA: 1606 Sq. Ft.
BALCONY & ENTRY: 278 Sq. Ft.
TOTAL: 1884 Sq. Ft.

GULF OF MEXICO

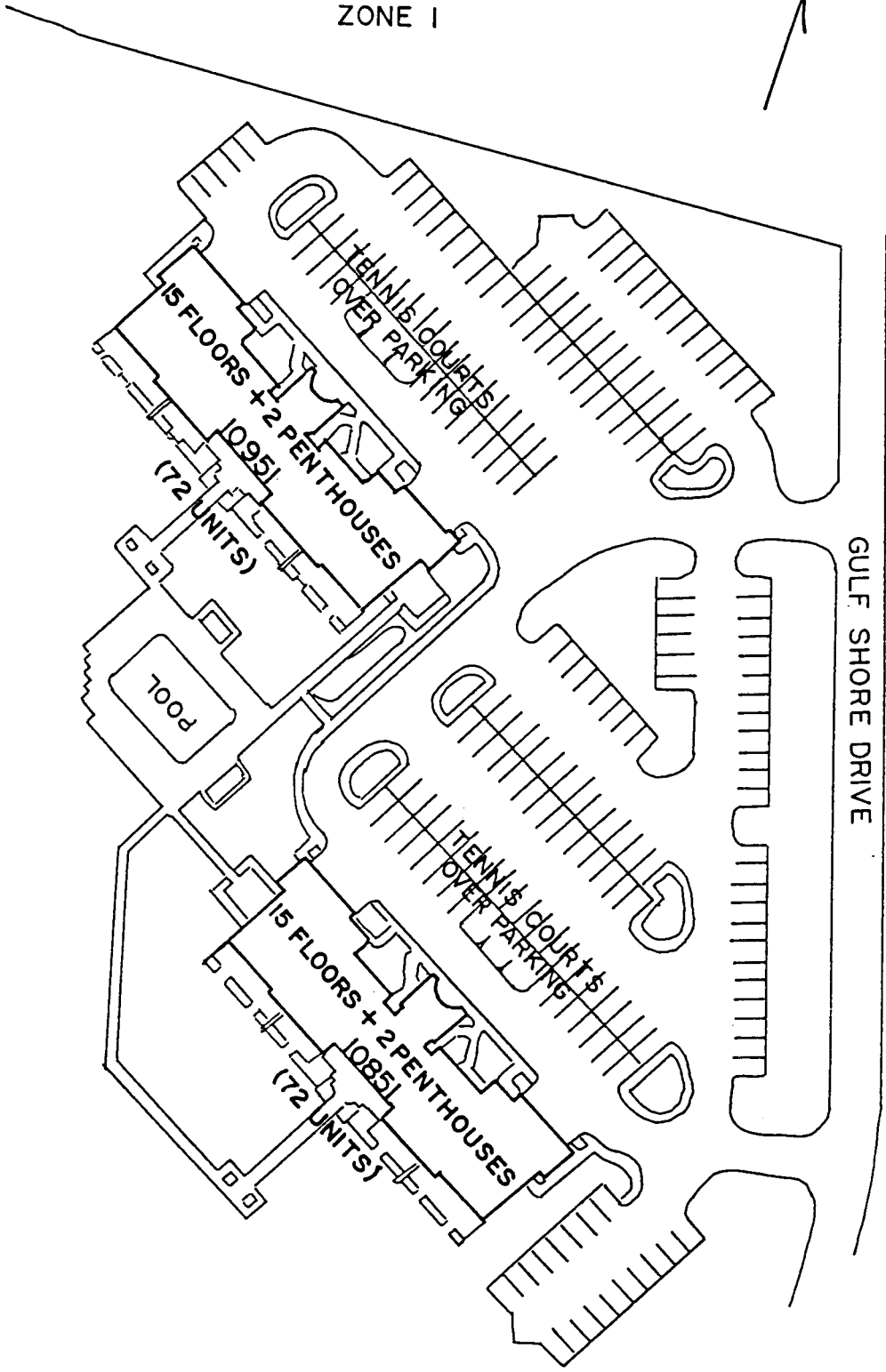


VANDERBILT GULFSIDE
10851 & 10951 GULF SHORE DRIVE
ZONE I

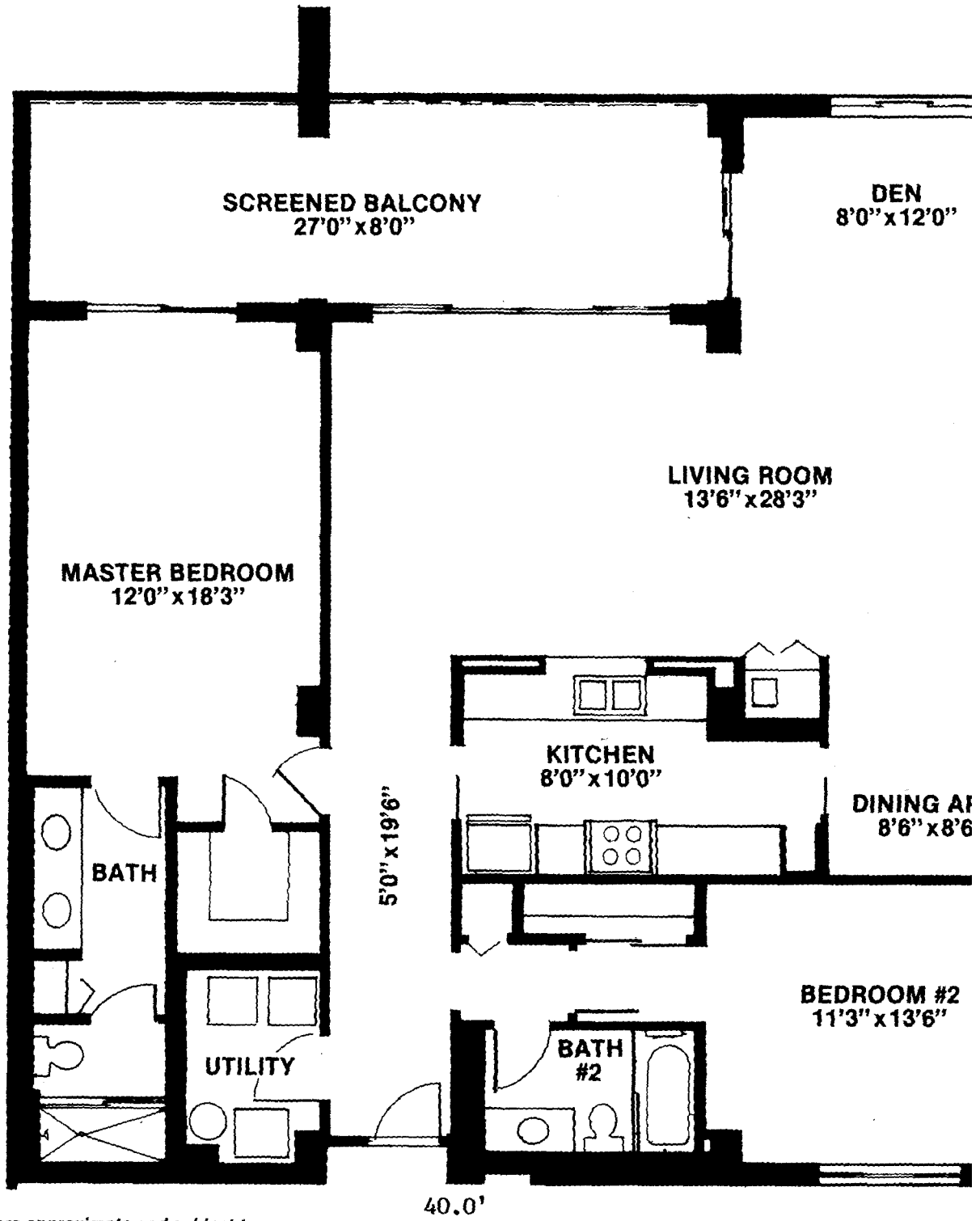
1-45



GULF OF MEXICO



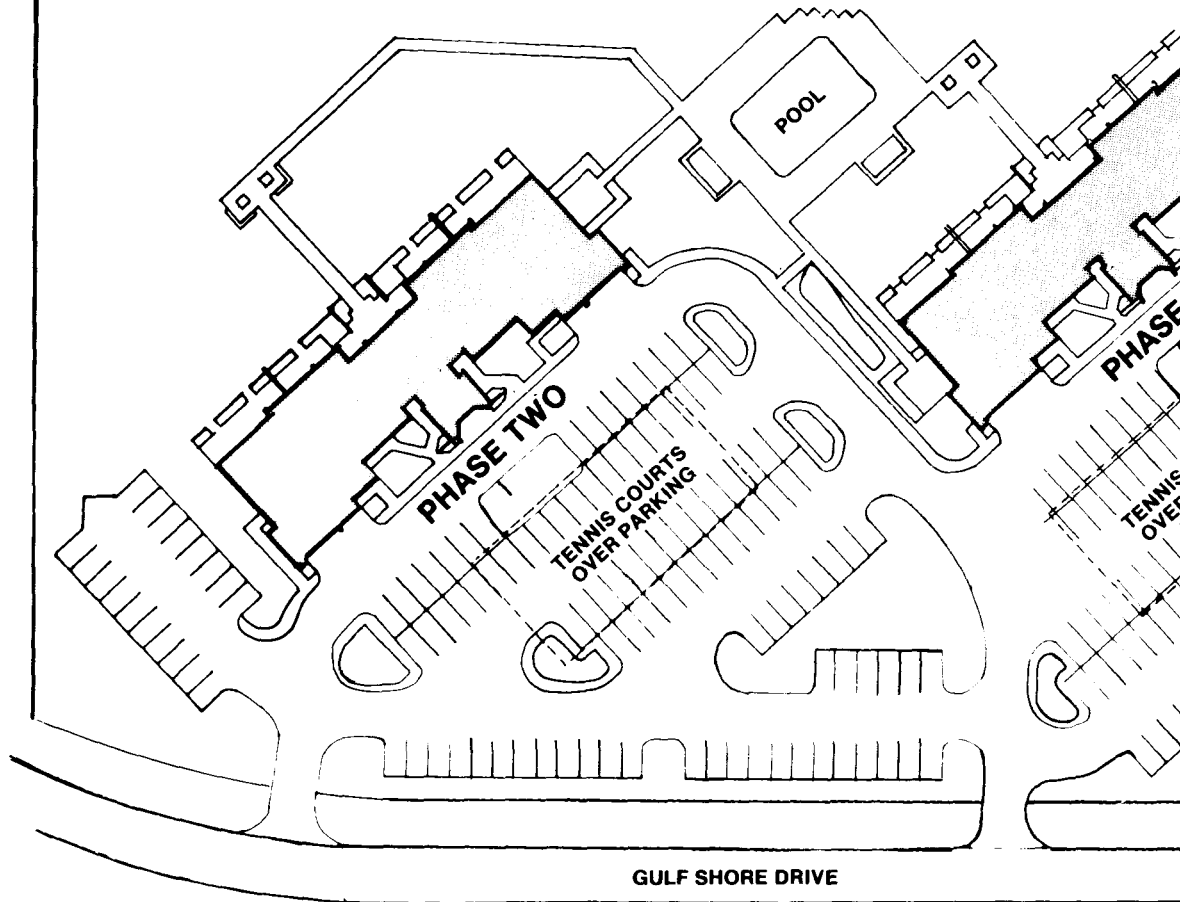
GULF SHORE DRIVE



All dimensions are approximate and subject to minor variations. This is a preliminary plan.

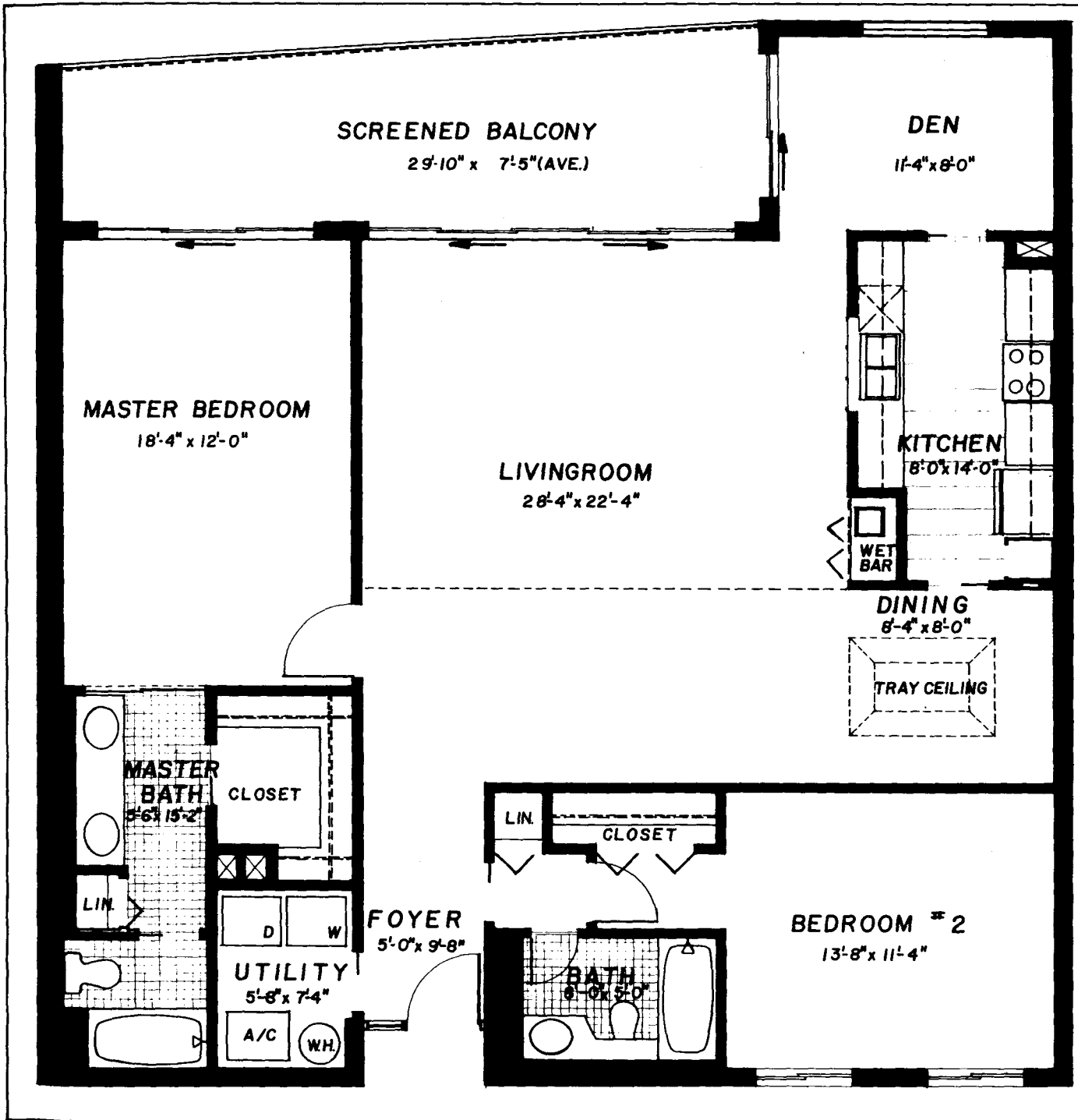
VANDERBILT

gulfside

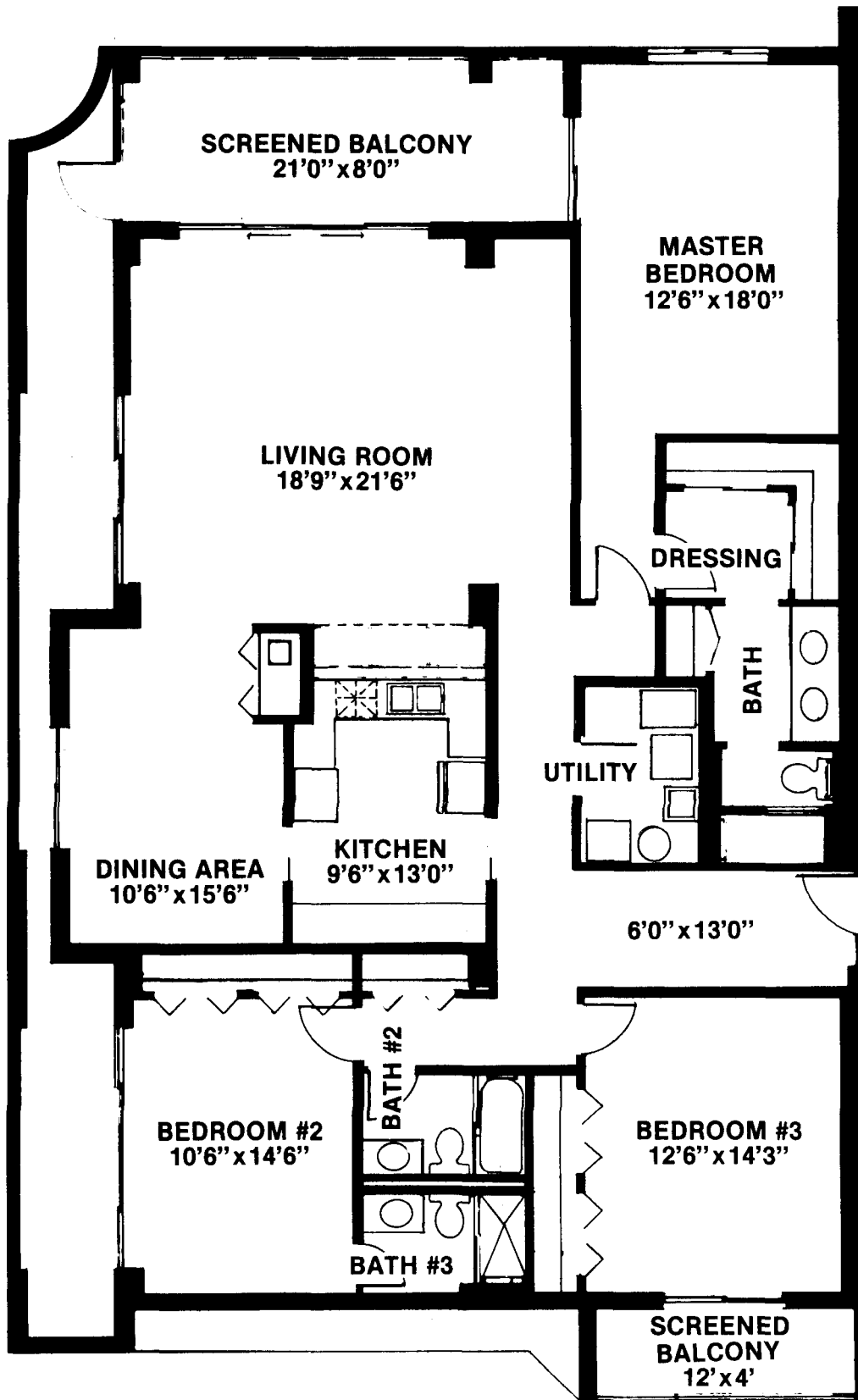


Site Plan

GULF OF MEXICO



Apartment is typical. May be opposite hand.
All dimensions are approximate and subject to minor variation.



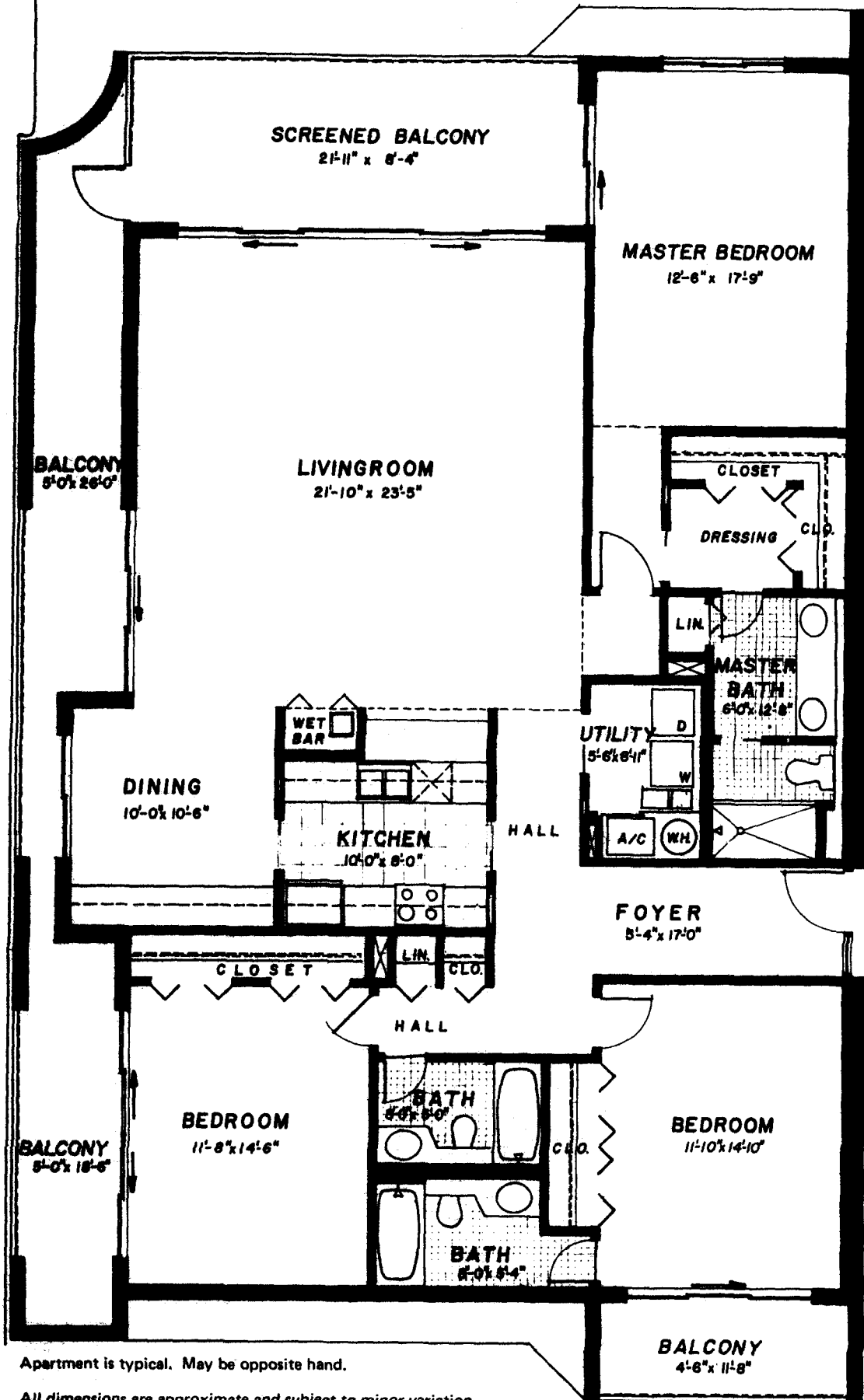
APT. A
3 BEDROOM
3 BATH

All dimensions are approximate and subject to minor variations. This is a preliminary plan.



10851 Gulf Shore Drive
 Naples, Florida 33940

GULF OF MEXICO



Apartment is typical. May be opposite hand.

All dimensions are approximate and subject to minor variation.

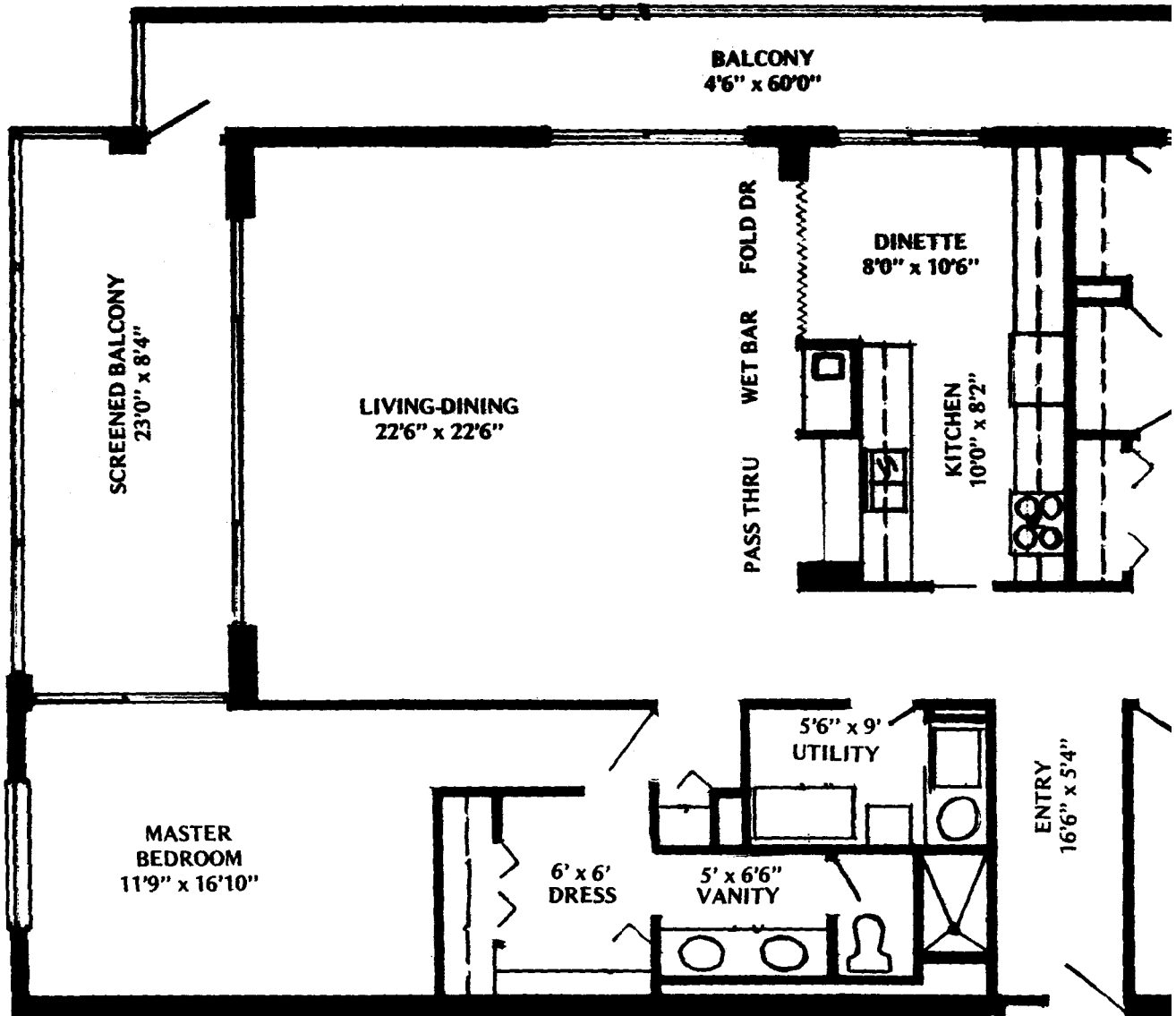
Vanderbilt
Ogulsia

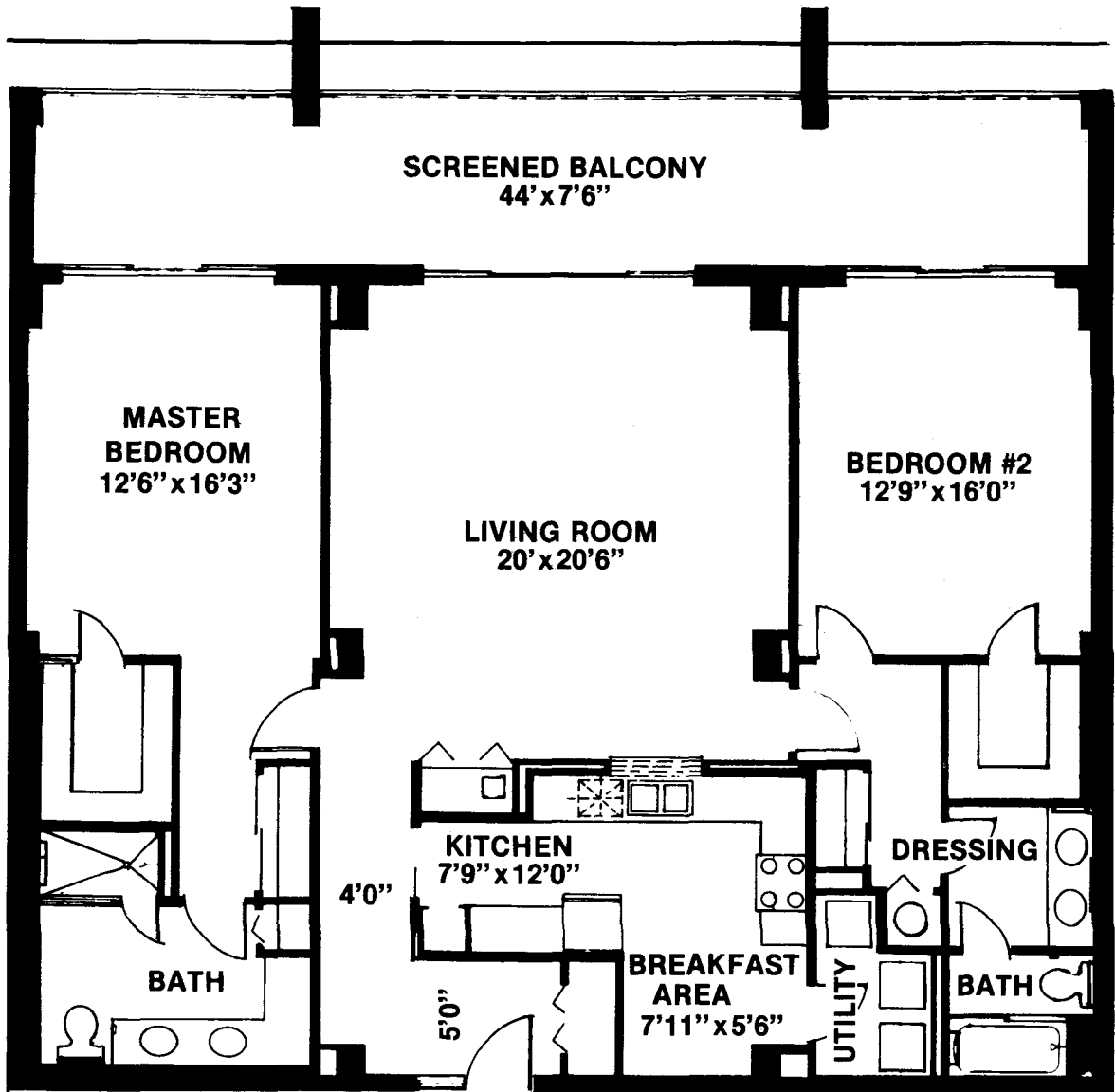
THREE BEDROOM SOL
ENCLOSED: 2037 SQ. F
BALCONY: 530 SQ. FT.

THREE BEDROOM NORTH

ENCLOSED AREA 1964 SQ. FT.
BALCONIES 529 SQ. FT. Total Area 2493 Sq. Ft.

GULF OF MEXICO



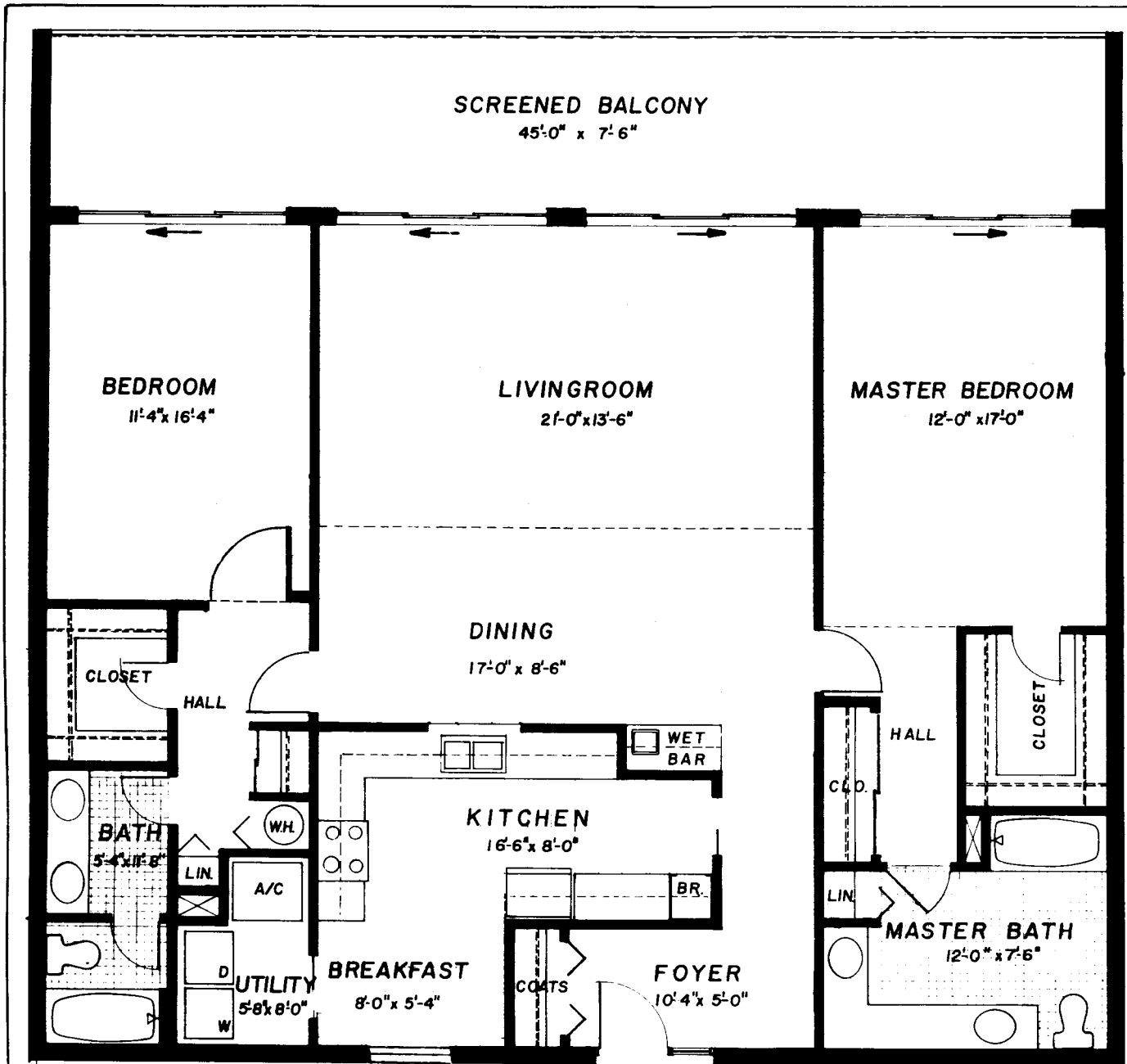


All dimensions are approximate and subject to minor variations. This is a preliminary plan.

A
2
2



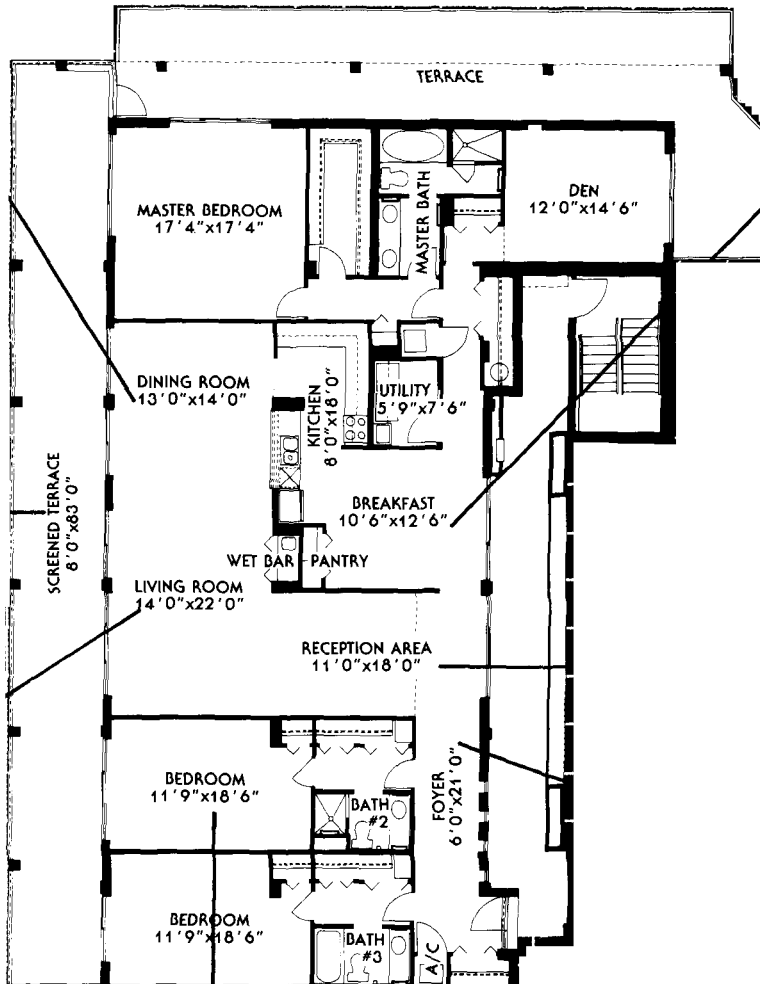
GULF OF MEXICO



Apartment is typical. May be opposite hand.

All dimensions are approximate and subject to minor variation.

T
E
B

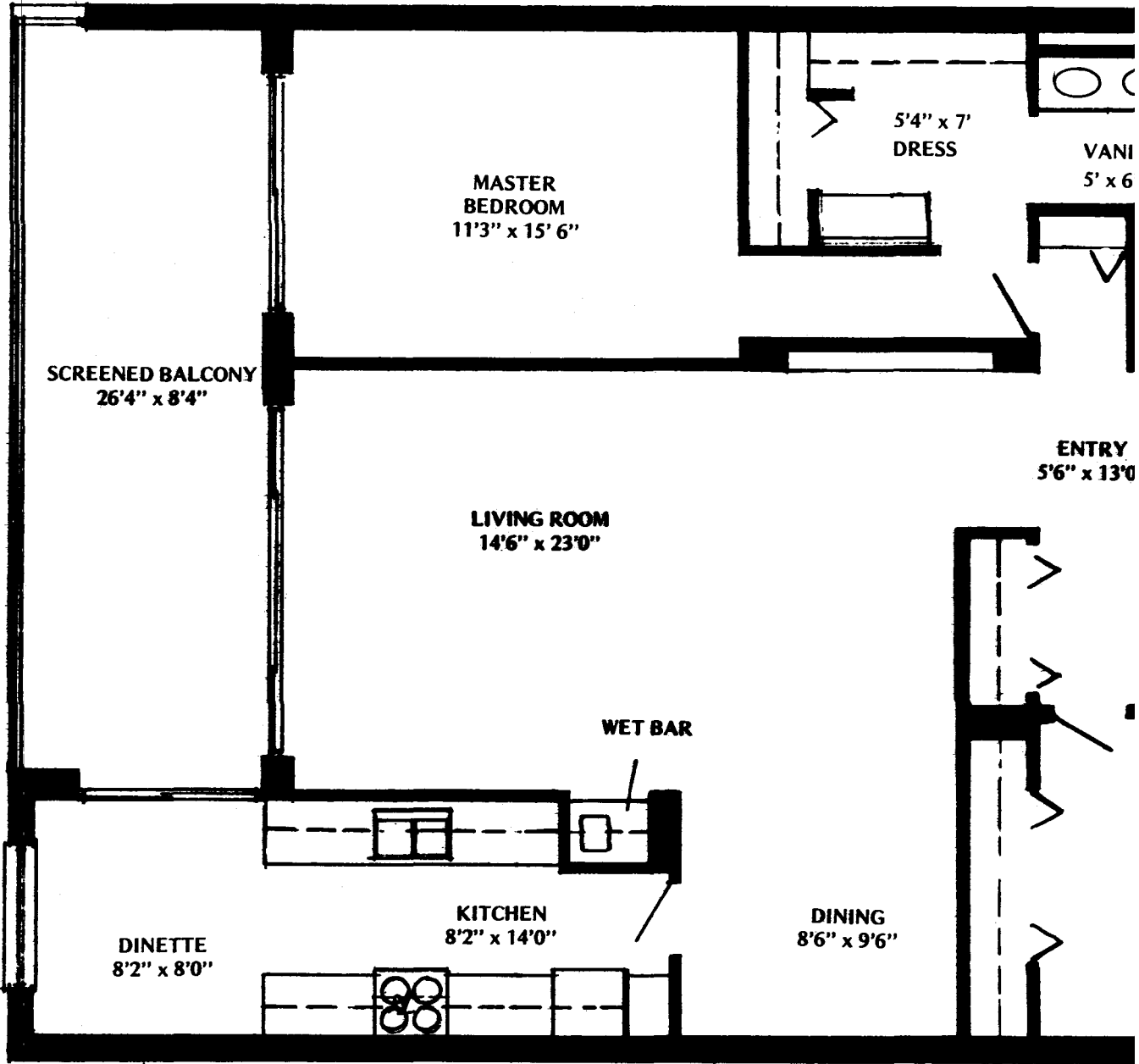


TWO BEDROOM NORTH

ENCLOSED AREA 1489 SQ. FT.

Balcony and Entry 242 Sq. Ft. Total Area 1731 Sq. Ft.

GULF OF MEXICO



THREE BEDROOM SOUTH

ENCLOSED AREA: 1964 Sq. Ft.

BALCONIES: 529 Sq. Ft.

TOTAL AREA: 2493 Sq. Ft.

GULF OF MEXICO

