

Capri

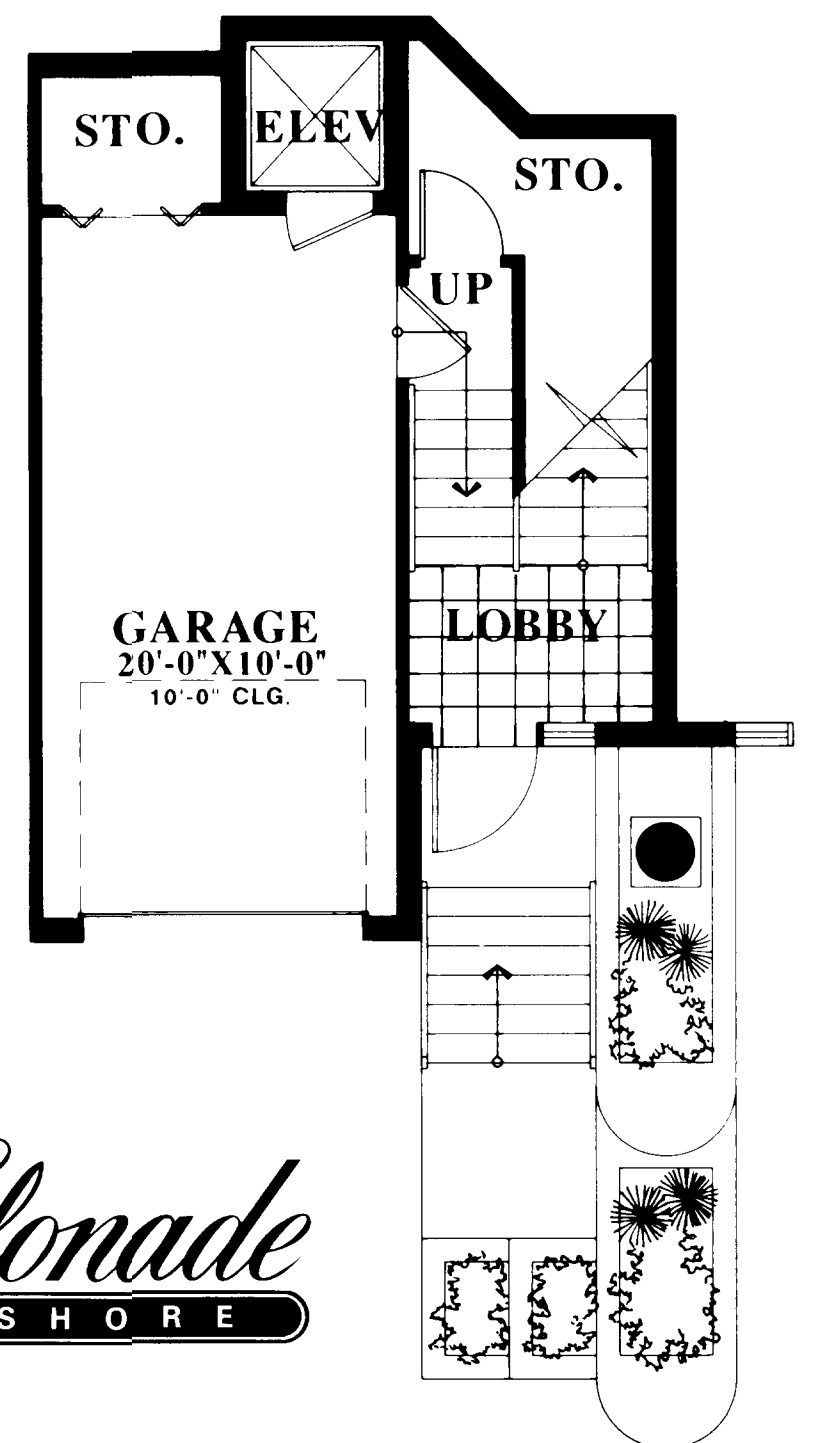
3 BEDROOMS • 2½ BATHS

The Capri is a unique, spectacular architectural achievement. Truly in a class by itself, this 3 bedroom, 2½ bath upper level Villa incorporates 2,439 square feet of elegant living space. The grand Foyer features a graceful niche to showcase your favorite piece of art. Majestic interior columns herald the entrance to the expansive Living Room. The spacious Kitchen is a gourmet's delight and features a convenient pass-through into the informal Dining Room. A commanding bay window provides a panoramic view from the informal Dining Room. French doors and sliding glass doors provide access from the formal Dining Room, Living Room and Master Suite to the splendid tropical Lanai. The luxurious Master Suite features an impressive tray ceiling and two immense walk-in closets. Dramatic ten foot ceilings and eight foot doors are used extensively throughout the Villa. In many areas, palatial vaulted ceilings further enhance the feeling of quiet elegance. Your own attached garage and private elevator ensure your comfort and privacy.

The Capri blends the classic look of luxury and refinement, while providing for your every need and comfort.

Living area	2,439 sq. ft.
Garage	200 sq. ft.
Lanai	305 sq. ft.
Entry	35 sq. ft.
Storage Area	106 sq. ft.
TOTAL	3,085 sq. ft.

All dimensions are approximate. The developer reserves the right to change and alter all materials, specifications, features, dimensions and designs without notice.



The Colonade
AT PARK SHORE

ORAL REPRESENTATION CANNOT BE RELIED UPON AS CORRECTLY STATING REPRESENTATION OF THE DEVELOPER. FOR CORRECT REPRESENTATIONS, MAKE REFERENCE TO THE BROCHURE AND THE DOCUMENTS REQUIRED BY SECTION 718.503, FLORIDA STATUTES, TO BE FURNISHED BY THE DEVELOPER TO A BUYER OR LESSEE.