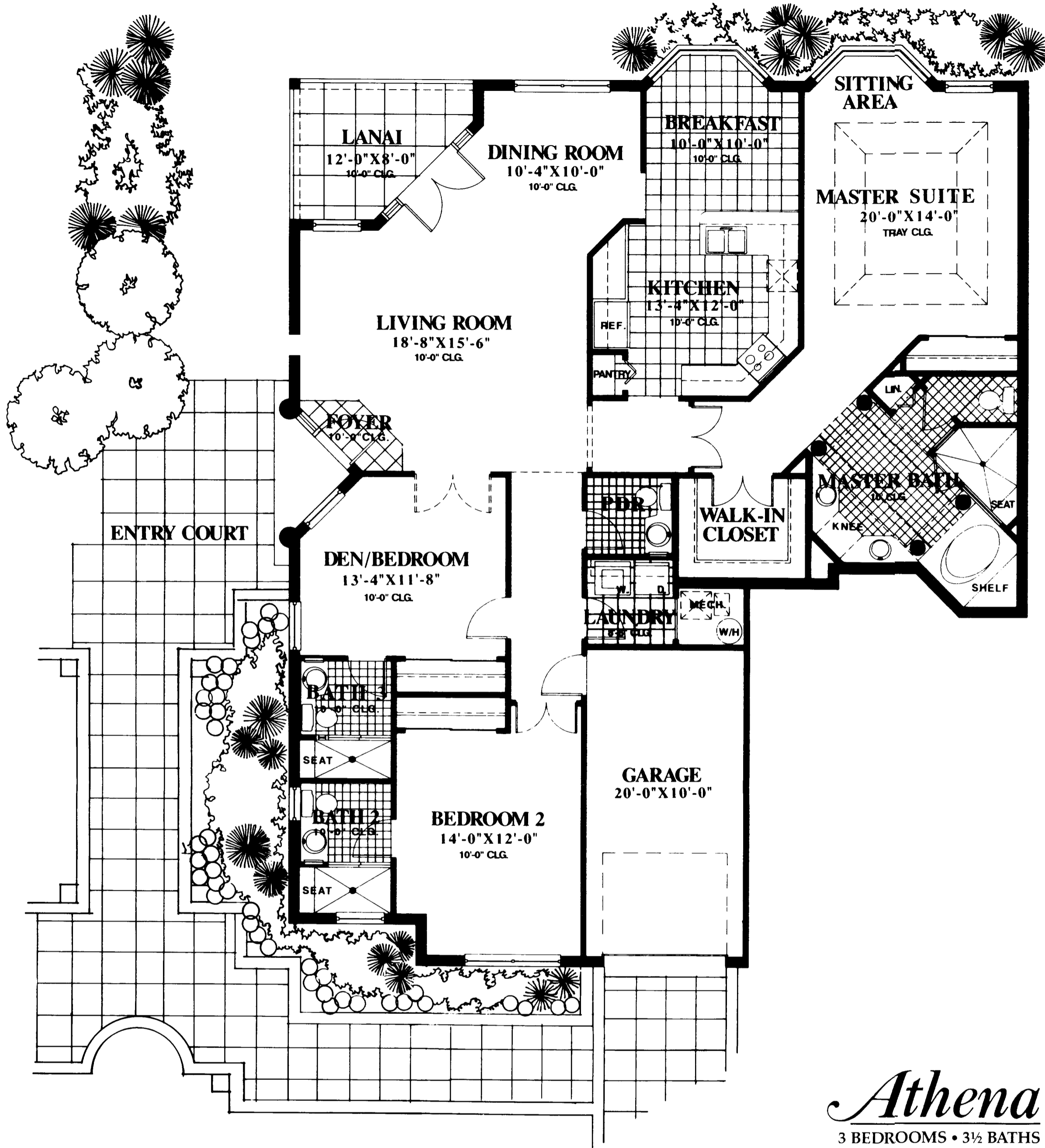


PRIVATE COURT



Athena
3 BEDROOMS • 3½ BATHS

The Athena is an architectural masterpiece designed with your every need and comfort in mind. This expansive 3 bedroom, 3½ bath Villa flows gracefully from Living Room to formal Dining Room, through splendid French doors to the inviting Lanai. The spacious Kitchen is a gourmet's delight with every imaginable convenience. Picturesque bay windows highlight the informal Dining Room as well as a cozy separate sitting area in the Master Suite. The Master Suite also features an impressive tray ceiling and two separate closets . . . including a spacious walk-in closet. Extensive use of dramatic ten foot ceilings and eight foot doors throughout the Villa further enhance the feeling of understated elegance. Your own attached garage and direct entrance ensure your comfort and privacy.

The Athena epitomizes elegant living and sets a new standard in architectural design.

The Colonnade
AT PARK SHORE

| | |
|--------------|----------------------|
| Living area | 2,005 sq. ft. |
| Garage | 200 sq. ft. |
| Lanai | 89 sq. ft. |
| Entry | 28 sq. ft. |
| TOTAL | 2,322 sq. ft. |

All dimensions are approximate. The developer reserves the right to change and alter all materials, specifications, features, dimensions and designs without notice.

ORAL REPRESENTATION CANNOT BE RELIED UPON AS CORRECTLY STATING REPRESENTATION OF THE DEVELOPER. FOR CORRECT REPRESENTATIONS, MAKE REFERENCE TO THE BROCHURE AND THE DOCUMENTS REQUIRED BY SECTION 718.503, FLORIDA STATUTES, TO BE FURNISHED BY THE DEVELOPER TO A BUYER OR LESSEE.